

Sharing Palliative Care Expertise Around the Region

At Fletcher Allen, we want to help hospitals and health care providers in Vermont and northern New York provide the best possible palliative care services for your community. Our Rural Palliative Care Network allows us to share our expertise and educate clinicians and community hospitals in our region about palliative care.

The Rural Palliative Care Network is an expansion of Fletcher Allen's Palliative Care Service – an interdisciplinary, patient- and family-centered program designed to deliver excellent pain and symptom management, advanced care planning and end-of-life care.

The Rural Palliative Care Network offers an array of services for hospitals and health care providers in the region.

Telemedicine consultation

Fletcher Allen provides telemedicine palliative care consultations for patients with life-threatening conditions being transferred to Fletcher Allen's Medical Intensive Care Unit (MICU). Patients with any of the following conditions may be candidates for a palliative care consultation:

- prolonged multi-system organ failure
- metastatic cancer with respiratory or cardiac failure
- severe anoxic encephalopathy
- very advanced age (above 90 years) associated with organ failure
- advanced dementia
- poor baseline quality of life
- end-stage heart, liver or lung disease (less than a six-month prognosis prior to acute illness)

To request a telemedicine consultation from our 24/7 Palliative Care Hot Line, call Provider Access Service (PAS) at (802) 847-2700 or (800) 639-2480.

Site visits

Members of our Palliative Care team are also available to visit your site. For more information, or to arrange a site visit, contact Allan Ramsay, MD, director of Palliative Care, at (802) 847-1023.

Ask Dr. Ramsay – or use our 24/7 hot line

To submit a question, visit www.FletcherAllen.org/palliative.

Palliative care mentorship program

Through our mentorship program, community providers can spend a day or longer with the Fletcher Allen Palliative Care Service. For further information, contact Allan Ramsay, MD, director of Palliative Care, at (802) 847-1023. Please note that you must apply six weeks in advance.

Weekly case conferences

Every Wednesday, we hold televised case conferences, available to our network via telemedicine.

For further information about all of the above offerings, visit www.FletcherAllen.org/palliative.

Our providers



Robert Macauley, MD

Medical Director, Clinical Ethics, Fletcher Allen

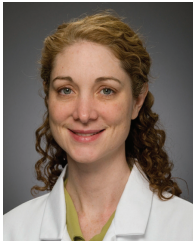
Palliative Care Physician, Fletcher Allen

SPECIALTY Clinical Ethics/Palliative Medicine/Pediatric Pain Medicine

AREAS OF EXPERTISE Palliative Care

EDUCATION **Medical School:** Yale University School of Medicine; **Residency:** Johns Hopkins Medical Center – Pediatrics

BOARD CERTIFICATION Pediatrics/Hospice and Palliative Medicine



Ursula Anne McVeigh, MD

Palliative Care Physician, Fletcher Allen

SPECIALTY Palliative Care/Primary Care Internal Medicine

EDUCATION **Medical School:** Yale University School of Medicine; **Residency:** Fletcher Allen/University of Vermont College of Medicine – Internal Medicine; **Fellowship:**

Massachusetts General Hospital – Palliative Care

BOARD CERTIFICATION Internal Medicine/Hospice and Palliative Medicine



Allan Ramsay, MD

Family Medicine Physician, Fletcher Allen

Director, Family Medicine Inpatient Services and Palliative Care, Fletcher Allen

Professor, University of Vermont College of Medicine

Vice Chair, Department of Family Medicine

SPECIALTY Family Medicine/Palliative Medicine

AREAS OF EXPERTISE Geriatrics/Hospice and Palliative Care/Internal Medicine

EDUCATION **Medical School:** Emory University School of Medicine; **Residency:** Emory University School of Medicine – Internal Medicine

BOARD CERTIFICATION Internal Medicine/Hospice and Palliative Medicine



Ann Laramee, APRN

Clinical Nurse Specialist and Nurse Practitioner, Fletcher Allen

Adjunct Faculty, University of Vermont

AREAS OF EXPERTISE Nursing and Heart Failure

EDUCATION Post Masters Certificate, Adult Nurse Practitioner – University of Vermont; MS, Nursing – University of Vermont; BS, Nursing – Oakland University, Rochester, Michigan

BOARD CERTIFICATION Clinical Nurse Specialist, Medical/Surgical/Adult Nurse Practitioner/Hospice and Palliative Medicine



Maura McClure, RN

Clinical Nurse Specialist, Palliative Care Service

Adjunct Faculty, University of Vermont, Department of Family Medicine

EDUCATION MS, Nursing – University of Vermont; BSN, University of Vermont; Diploma, St. Vincent's School of Nursing;

Certification in Palliative and Hospice Nursing



Barbara Segal, RN

Clinical Nurse Specialist, Palliative Care Service

Adjunct Faculty, UVM School of Nursing and Allied Health Sciences; UVM Medical School, Department of Family Medicine

EDUCATION MS, Boston University; BS, Boston, University; RN, Hospital of the University of Pennsylvania

For more information

For further information about the Rural Palliative Care Network, contact Gordon Meyer, administrative coordinator, at (802) 847-2000.